

# Adidas Run Vancouver Graphic Tee

By Harry KP



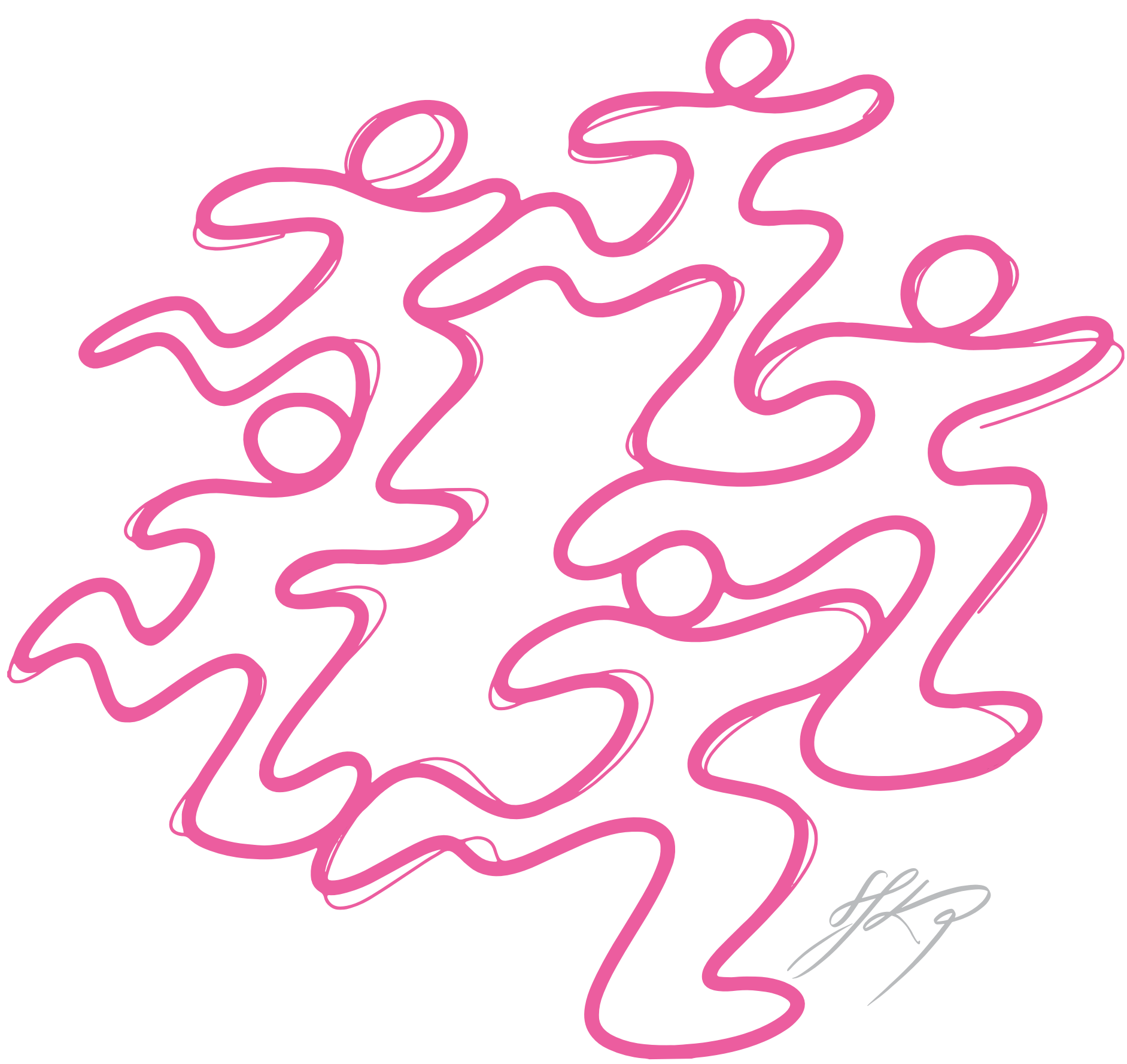
Inspired by Vancouver's incredible flowing landscapes; the continuous Seawall, the striking mountain ridges, and the breathtaking Sea to Sky Highway.

Hidden along the continuous line are key landmarks from upcoming Vancouver races, as well as features, routes, and inspirations from the city.

This design reflects the sense of community, the simple beauty of running, and the adventures along the way.



N 49.2832689  
E -123.122416



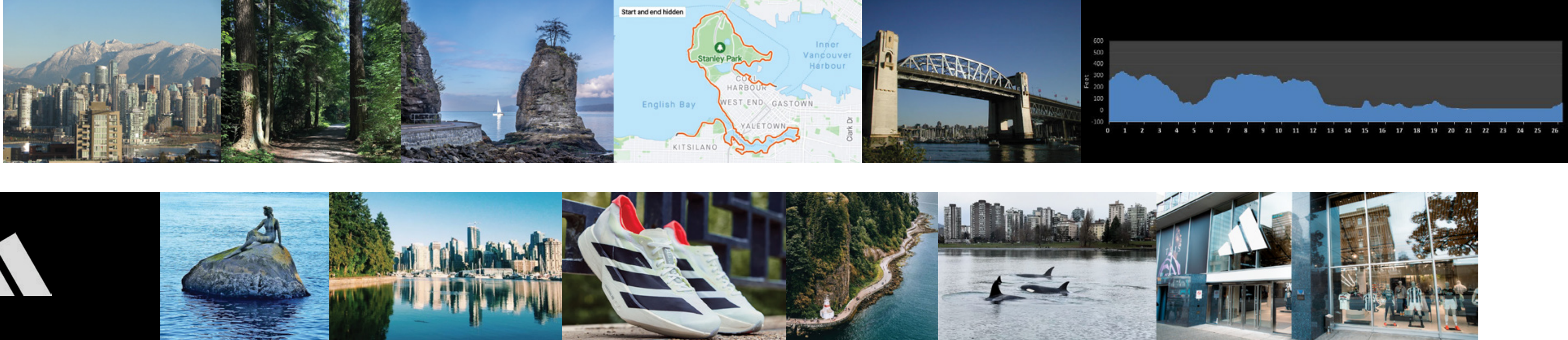
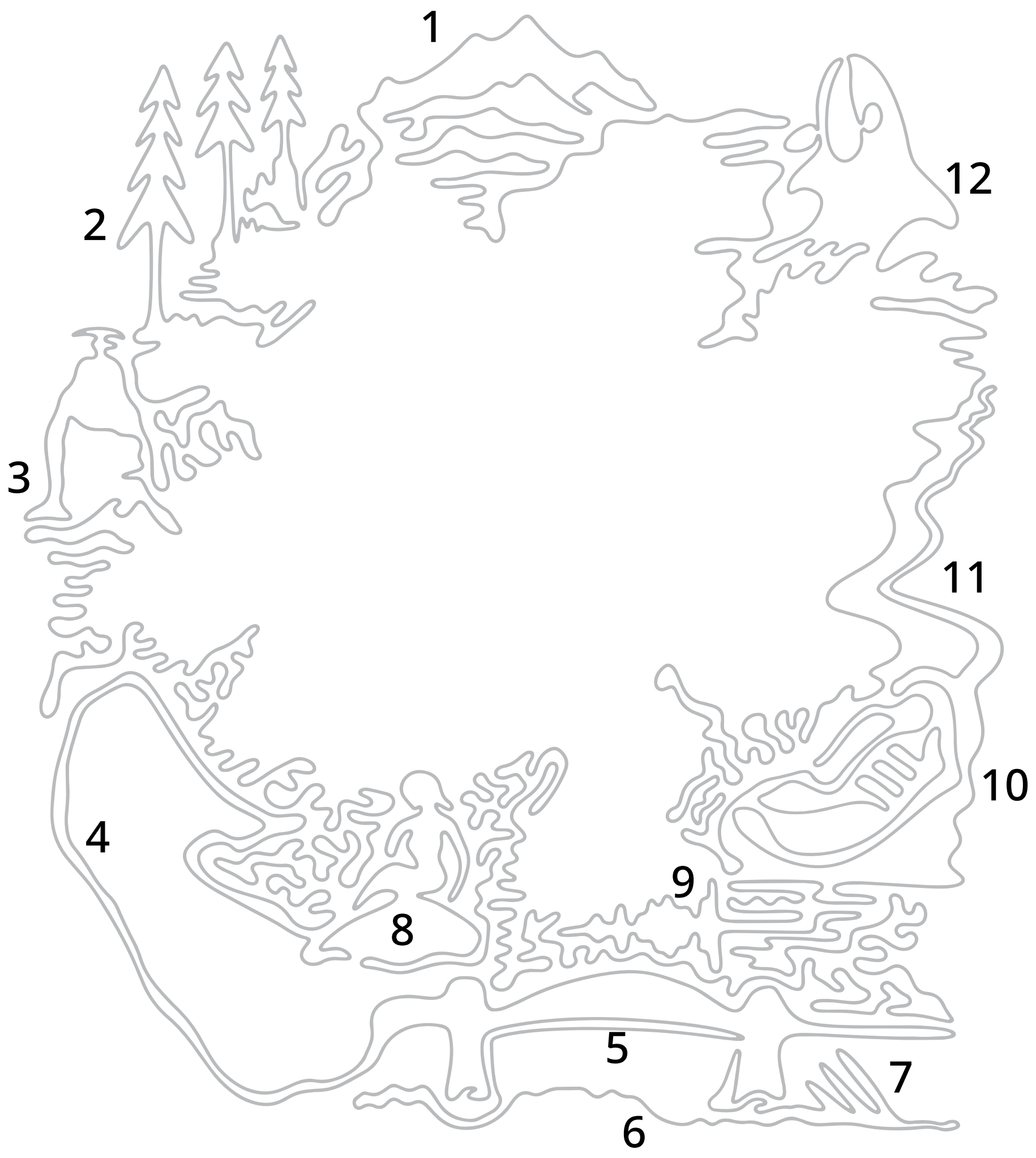
The 5 runners represent the 5 pillars of Adidas Runners:

- Movement.***
- Nutrition.***
- Recovery.***
- Gear.***
- Mindset.***

Equally, they can be the different stages of your run.  
Or simply, you and your pals.  
1 continuous line represents the unity of Adidas Runners.

## A RUN THROUGH VANCOUVER

1. The mountain ridgeline rising above the city
2. Stanley Park/ Pacific spirit trails
3. Siwash rock
4. Stanley Park Seawall loop.
5. One of the 5 bridges of Vancouver
6. Elevation graph for the BMO Vancouver Marathon
7. The 3 Stripes
8. Girl in a Westuit Statue
9. Symmetry of the buildings reflected off the water
10. Adidas running shoe
11. The north west stretch of the Seawall
12. A rare but special visit of Orca's around the Seawall



VAN  
COU  
VER

N 49.2832689  
E -123.122416

HKP